

INSTALLATION INSTRUCTION

5.5"&7"&9" Round/Square LED Ceiling Fixtures

7410WH (SQUARE)
7412WH (SQUARE)

7420WH (ROUND)
7422WH (ROUND)

SAFETY RECOMMENDATIONS

- 1.RISK OF ELECTRIC SHOCK-THIS PRODUCT MUST BE INSTALLED IN ACCORDANCE WITH APPLICABLE INSTALLATION CODES BY A PERSON FAMILIAR WITH MENTIONED ABOVE CODES AND HAZARDS INVOLVED. DISCONNECT POWER AT CIRCUIT BREAKER OR FUSE BEFORE INSTALLING OR SERVICING.
- 2.Before use of the product carefully read the whole Operation Manual.
- 3.THE PRODUCT IS PURPOSED FOR INTERIOR USE ONLY.SUITABLE FOR DAMP LOCATIONS.
- 4.Protect the product against direct contact with water.
- 5.Assemble the product only with the use of parts provided and the housing;improper assembly may result in device falling which could damage the product,personal property or cause injury.
- 6.Assembly shall follow with accessories delivered with the set only.
- 7.The device is not a toy.KEEP OUT OF REACH OF CHILDREN.

DIMMING

This product is compattible with most residential type dimmers available on the market,The dimming performance will depend on kind of dimmer and dimmer settings.

CLEANING AND STORAGE

- Clean with a soft damp cloth.While cleaning with the damp cloth make sure the power is off.
- Do not clean with liquids or abrasives.
- Store at ambient temperature.



ROUND

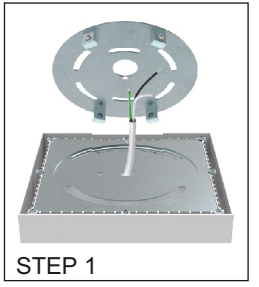


SQUARE

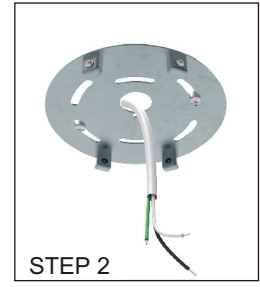
PRODUCT PARAMETERS

SIZE	SHAPE	INPUT	WATTAGE	LUMEN EFFICIENCY	CCT
5.5"	Round/Square	120V AC 60Hz	11W	100lm/W	2700~6000K
7"			13W		
9"			18W		

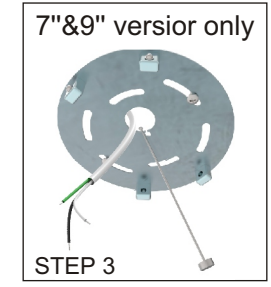
INSTATLLATION- - - - Seven simpls steps.



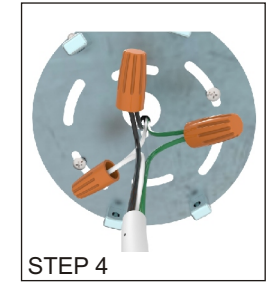
STEP 1
Remove the installation bracket from the back of the fixture



STEP 2
Attach the bracket to Junction box using the 2 screws(provided)- pull the AC cable through the bracket center hole



7"&9" versior only
STEP 3
When ready to make the wire connections,first install the Safety Installation Cable from light fixture by pushing into the"key hole"in bracket.



STEP 4
Make the wire connections



STEP 5
Push and feed all wires up into Junction Box as you raise the fixture up into place



STEP 6
Align slots on the edge of fixture with the ball bearings on the mounting bracket and PUSH to lock fixture in place



STEP 7
Installed- Congratulations... Enjoy the light!