



Features

- 120V AC and 24V DC options available
- Color temperatures in 2700K and 5000K as well as single colors (Amber, Blue, Green, Orange, Pink, and Red in 120V only)
- Up to 90 Lumens per foot
- Consumes only 2.4/ft (120V) or 2.8W/ft (24V)
- Dimmable 10-100%*
- Cuttable† every 18" (120V) and 12" (24V)
- Up to 150ft (120V) and 65ft (24V) run lengths
- Sold as 150ft reels** or by the foot (non-rated)
- cETLus Listed†
- Suitable for indoor and outdoor use
- 30,000 hours rated life

Available Colors



Dimming Options

- Standard (10-100%*)
- Low-voltage magnetic (10-100%*)
- Low-voltage electronic (10-100%*)

Listing / Ratings†



Polar 2 Neon Reels

Continuous lines of light for indoor or outdoor use, available in 24V and 120V options each with eight color choices. Parallel wiring to each LED ensures that if one LED goes out, the rest stay lighted. Use 24V Polar 2 with ELV drivers for maximum impact and/or when ETL listing is necessary for up to 65 foot run lengths.

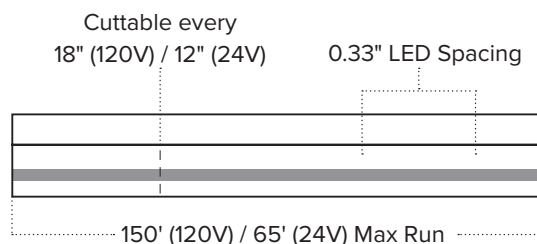
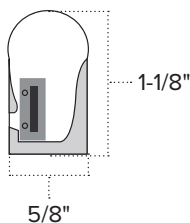
Technical Information

Series	P2-NF
Input Voltage	120V AC, 60Hz / 24V DC
CCT	2700K / 5000K / AY / BL / GR / OR / PI / RE
CRI	78+ (2700K / 5000K)
Wattage	2.4W per ft (120V) / 2.8W per ft (24V)
Lumens	Up to 90Lm per ft (see individual product)
Max Run	150 feet (120V) / 65 feet (24V)
Cuttable	Every 18" (120V) / every 12" (24V)
IP Rating	IP65**
Dimmable	10-100%*
Rating	cETLus Listed† for indoor/outdoor use
Rated Life	30,000 hrs

*Minimum loads may apply. Per the NEC, switched wall outlets cannot be used with wall dimmers.

**IP65 rated only when used with pre-attached molded power cord and end cap is either pre-attached or properly sealed with dielectric grease, silicone and shrink tube

†cETLus Listing for 120V is void if product is cut; cETLus Listing for 24V is valid for lengths cut to 65 feet or less.



Polar 2 Neon Reels



Warm White - 2700K Opaque White Jacket 79CRI / Up to 63Lm/ft (120V) 79CRI / Up to 90Lm/ft (24V)	Bright White - 5000K Opaque White Jacket 78CRI / Up to 63Lm/ft (120V) 78CRI / Up to 90Lm/ft (24V)	Amber LEDs Opaque Yellow Jacket 590nm / Up to 21Lm/ft (120V)	Blue LEDs Opaque Blue Jacket 469nm / Up to 5Lm/ft (120V)
--	--	--	--



Green LEDs Opaque Green Jacket 520nm / Up to 25Lm/ft (120V)	Orange LEDs Opaque Amber Jacket 606nm / Up to 12Lm/ft (120V)	Pink LEDs Opaque White Jacket 610nm / Up to 17Lm/ft (120V)	Red LEDs Opaque Red Jacket 619nm / Up to 5Lm/ft (120V)
---	--	--	--

120V Bulk Reels

P2-NF-WW (150ft)	P2-NF-WH (150ft)	P2-NF-AY (150ft)	P2-NF-BL (150ft)
P2-NF-GR (150ft)	P2-NF-OR (150ft)	P2-NF-PI (150ft)	P2-NF-RE (150ft)

120V Bulk Reels Include: (1) Attached P2-NF-CONKIT-8A / (4) P2-NF-CONKIT-8A / End cap on dead end

24V Bulk Reels

P2-NF-24V-WW (150ft)	P2-NF-24V-WH (150ft)
-----------------------------	-----------------------------

24V Bulk Reels Include: (1) Attached P2-NF-CONKIT-NP / (4) P2-NF-CONKIT-NP / End cap on dead end

Polar 2 Neon Reel Accessories



120V Power Connector Kit
(1) 5ft Power cord with fused plug and 8A inverter, (2) power pins, (1) end cap, and (2) 4" pieces of shrink tube
P2-NF-CONKIT-8A



120V Junction Box + Rectifier
120V 8A Junction Box enclosure with 7/8" bored input port and (2) output ports; Includes (2) P2 connection leads (1 attached, 1 loose) + compression clamps
120-JBOX-P2



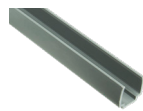
24V Power Connector Kit
(1) 5ft Power cord (no plug or inverter), (1) power pin, (1) end cap, and (2) 4" pieces of shrink tube
P2-NF-CONKIT-NP



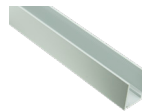
Linking Cables
P2-NF-JUMP.5 (6")
P2-NF-JUMP3 (3ft)
P2-NF-JUMP10 (10ft)



Invisible Splice Kit
(20) Splice pins and (10) 4" pieces of shrink tube
P2-NF-INV5



Mounting Track
Grey plastic
P2-NF-TRACK-3 (3ft)



Mounting Channel
Aluminum
P2-NF-CHAN-3 (3ft)



Mounting Clips
(10) Aluminum clips with (20) screws
P2-NF-CLIPS



End Caps
(10) Clear plastic end caps
P2-NF-ENDS